



Solar-to-Go

Low Cost Portable Solar Structures

A solar supports for DIY installs. No digging or concrete construction. Use ballast blocks for wind hold-down, or screws for anti-theft security. Build an entire solar array in one day.

Perfect for non-homeowners and temporary placement. Solar-to-go products are the latest offering to enable low cost and transportable solar components.

Any module Any size Any thickness

They are designed for DIY assembly requiring only a simple battery powered screw-gun, using simple step-by-step instructions. The finished supports can rest on the ground, be placed on shipping containers, or rest on flat roofs. Simple ballast weights hold them in place.

Renters Job Sites RV Power

Solar-To-Go features

- **Galvanized tube frame, #14 steel.**
- **Combine multiple structures using slip fittings.**
- **Triangle plates attach legs to ground tubes or shipping container edges**
- **Sola-Clamps(patent pending) hold virtually any size solar panels**
- **41" tall, 48" deep, 6ft wide ground tube**
- **Slip-fit frame assembly reduces shipping costs**
- **Single module kit supports one solar panel** (all kits includes 4 clamps each)
- **Expansion kit required for each additional solar panel. Slip fit to others**



Single Module Structure Prices start at \$339

FREE-STANDING SOLAR STRUCTURES

Use ballast blocks or hold-down screws to hold against wind. No concrete construction required.

Use Expansion kits to add more modules.



COMPATIBLE WITH ALL SOLAR PANEL SIZES

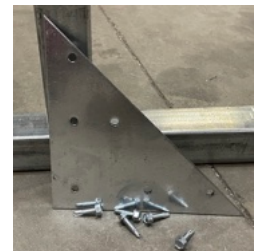
Solar modules are secured in place by movable clamps so varying widths are easily accommodated. Slip fittings can be adjusted to expand for various leg spacings.

RELOCATE WITHOUT DISASSEMBLY

Time to move? No problem, assembled structures can be transported whole or broken down for convenience.

Triangle Gusset Plates

Secure vertical legs to ground tubes at spacings that match the width of solar panels. (attach screws included)



Sola-Clamps Mount Any Module(patent pending)

Clamps attach to the underside lip of solar panels, effectively trapping the panel against movement. Set screws secure clamp at any position along the solar panel edge.

